




Administration and Planning

Borough of Manhattan Community College
The City University of New York
www.bmcc.cuny.edu

199 Chambers Street
New York, NY 10007-1097
tel. 212-220-8015
fax 212-220-2370

MEMORANDUM

To: Professor Caterina Mata

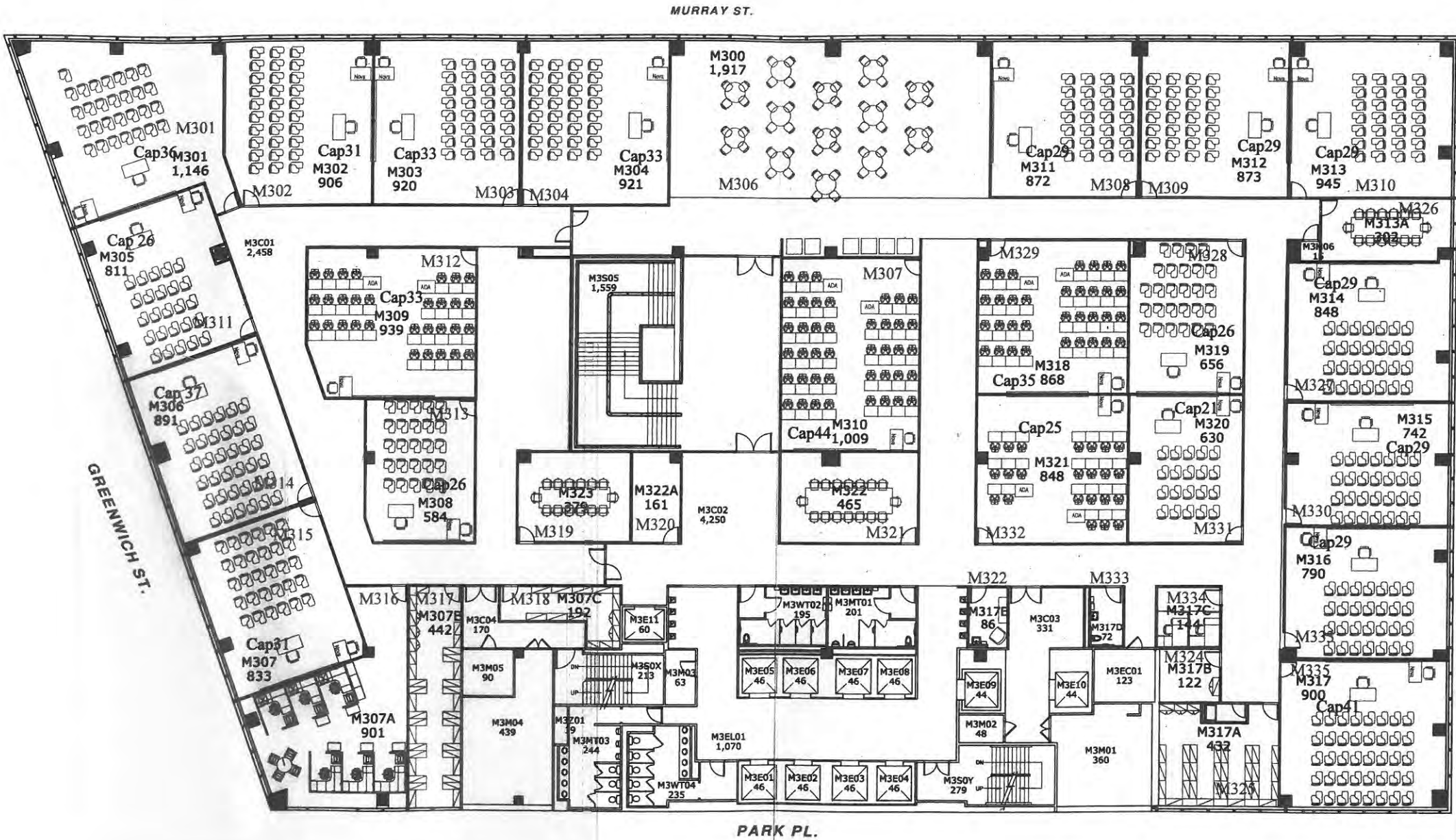
From: G. Scott Anderson 

Date: March 13, 2019

Subject: Report of the Committee on Facilities and Safety March 6, 2019 Meeting

- I. Review of October 3, 2018 Meeting Report
The Committee will receive an updated copy of ongoing and future projects under separate cover (Attached)
- II. Facility Projects Report
 - a. In-house and Capital projects listing (copy Attached)
 - b. Bathroom project: Day 2 items of completed units were discussed and in addition to the coat hooks in the stalls, implementation of a pilot test of napkin dispensers at the doors, it will also include installation of shelving for the staff rooms.
 - c. The Committee will be given a copy of the final floor plans for the 31 new classrooms built in Murray Street for spring semester classes. (Attached)
 - d. The Committee received a verbal report on the status of the college's furniture orders which have delayed many the completion of several projects at the college.
 - e. BMCC is insisting on the installation of bollards at the foot of the Ramp, when the new surface is installed.
 - f. Members of the Science Department wanted to reserve N699 for the NSF work this summer and were advised to contact Anita Samuels to block the time.
- III. Environmental Health and Safety
 - a. Public Announcement and Fire Alarm systems will be reviewed and updated where needed to increase decibel level and clarity to all classrooms, office suites and bathrooms.
 - b. Menstruation products was discussed and how they can be made more readily available to students in need. Multi-packets will be made available for free through the Women's Center, Health Services and One Stop locations. Single-unit dispensers will be installed in each of the main three campus buildings as a pilot program. Additional signage will go into the bathroom stalls regarding correct disposal of paper products.

70 MURRAY STREET BUILDING
BOROUGH OF MANHATTAN COMMUNITY COLLEGE



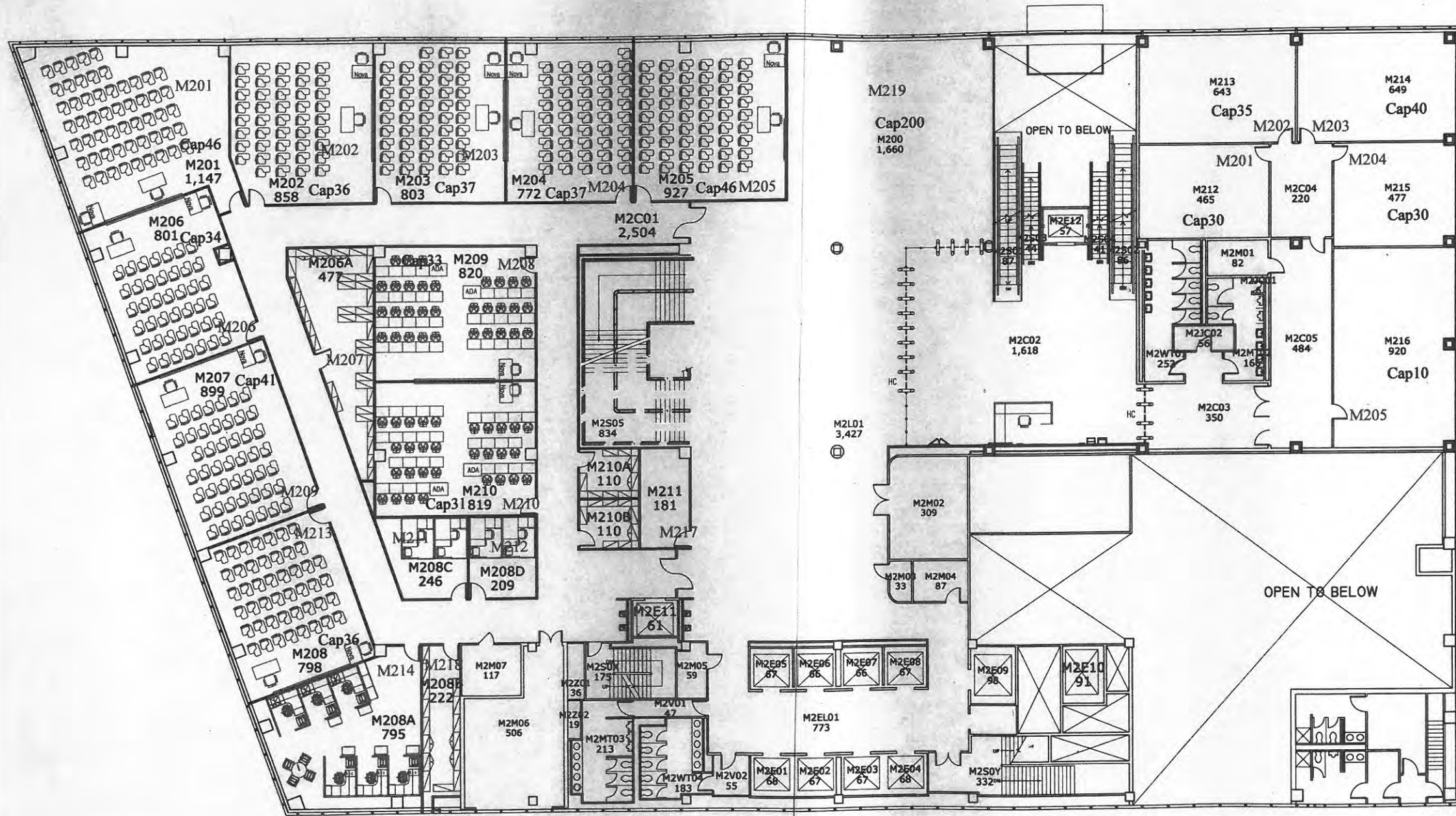
MURRAY ST.

GRENWICH ST.

PARK PL.

DRAWING TITLE:
THIRD FLOOR PLAN

SCALE:
NOT TO SCALE



70 MURRAY STREET BUILDING
BOROUGH OF MANHATTAN COMMUNITY COLLEGE

- c. The Committee also discussed the laboratory gas valve tests to be conducted with the EHS Officer and CLTs. There was also a discussion about goggles for the Chem Labs and pipette disposal. Regarding a request for new chairs, the college will review any specs developed by the Department and order whatever permissible and consistent with Procurement procedures.
- d. The committee received a verbal report on the college's EO4 (Recycling) Report. In addition, Facilities reported that it has a dedicated staff member to sort all refuse to further improve Chambers Street's recycled waste accountability.

IV. Safety Report

- a. Public Safety presented an overview presentation and demonstration of CPR, AED and first aid training for students, faculty and staff groups to the Committee. This new initiative is designed to provide rudimentary exposure to these life safety trainings while encouraging more participation in the free training programs conducted by the Public Safety Department. (Attachment)

V. Sustainability

- a. The date of the next College Sustainability Fair will be April 17, 2019 from 12 Noon to 4 PM in the RHT.

Attachments

CAPITAL AND IN-HOUSE PROJECTS 2017-2020 (Updated 3/5/19)

COMPLETED

- **70 Murray Street Expansion (Approx. 55,000sqft):** Additional instructional space on the 2nd and 3rd floor of this facility, with 31 smart classrooms (inclusive of 6 computer labs) and supporting spaces, such as administrative offices, conference rooms, students lounge areas, printing/copying facilities, respite room and bathrooms (including an all gender, single use). The floors are also connected via grand modern open stair, allowing ease of access without relying on elevators. *Current Status – Substantially Complete and Operational (winter 2019)*
- **Comprehensive Energy Efficiency HVAC Upgrade:** Installed two new chillers and pumps, replaced 3 air handlers and refurbished 7 air handlers, insulation, new vents, and louvers and fume hoods. *Current Status – Substantially Completed and Operational (Pending UV Filtration and FA Devices)*
- **Gym HVAC Installation:** Install new self-contained HVAC rooftop with new piping, controls and retrofitting of existing catwalk. *Current Status – Substantially Completed and Operational (Pending Commissioning for Cooling Operations).*
- **Pool Renovation:** New HVAC, filtration and pumping system, tiling, mural, bleacher and pool cover. *Current Status – Operational (winter 2019)*
- ***Maker Lab (Room S608):** Install exhaust fan unit for adequate ventilation – finish ceiling, lighting, VCT flooring and built inside storage room, new furniture – *Current Status - Operational (summer 2018).*
- ***Media Studios Area:** Sound proof studios, relocate several walls, new ceiling/lighting/painting, new VCT/carpet flooring, new glass walls/cubicles, install new doors and window shades – *Current Status – Operational (summer 2018).*
- ***Bursar’s Office:** Complete renovation and new furniture – *Current Status – Operational (summer 2018)*
- ***Student Development Center:** Fabrication and installation of new entry doors – *Current Status – Operational (spring 2018).*
- ***FH Bathrooms Flushometer:** Retrofit existing flushometer with Sloan Optima Plus (G2 Units). Work completed by Sloan at no charge (\$100K potential cost) – *Current Status – Operational (spring 2018).*
- ***Public Affairs Reception Area:** Reconfigure reception area – *Current Status – Operational (spring 2018).*
- ***FH Air Handler Return Units:** Purchase and replace additional bypass board due to life expectancy failure – *Current Status – Operations (winter 2018).*
- ***Multi-purpose Computer Lab (FH1113):** Remove/replace existing furniture – Install new power whips for new furniture, IT provide Data – *Current Status - Operational (winter 2018).*
- **Photovoltaic Panels Installation:** Install 956 solar panels capable of generating 306,500 kW annually, inverters and attendant monitoring. *Current Status – Operational (winter 2017).*

1% Completed (Phase 1 at south end 7th Floor during summer break with subsequent phases and overall anticipated completion dependent on available OTPS funding).

DESIGN

- **Cooling Tower:** Replace existing towers with water and energy efficient 4 unit system with smaller footprint. *Current Status – Phased project due to funding constraints, emergency repairs to be completed prior to start of 2019 cooling season, complete replacement TBD.*
- **Student Café, Food Prep. and Serveries Reconstruction:** Overhaul to 1 and 2 floor food preparation area, complete renovation of café and serveries to include lighting, flooring, HVAC, fixtures and restaurant equipment. *Current Status – 60% Completed (Anticipated design completion winter 2019)*
- **Battery Storage:** Installation of 10 rack Ni-Mg storage unit in telecom room behind gym capable of storing 115kW. *Current Status – 75% Completed (Project on Hold due to regulatory approval on battery equipment)*
- **Replacement of Water Main Isolation Street Valves:** Replacement of existing inoperable isolation valves to provide the operational flexibility to isolate water flow for emergency repairs and plumbing upgrades, without having to turn off water for entire building. *Current Status – 25% Completed (Anticipated design completion fall 2019).*
- **Public Safety Locker Rooms:** Construction of adequate locker room space for Male and Female Public Safety Staff. *Current Status – 85% Completed (Anticipated completion spring 2019).*
- ***RHT Shades/Lighting AV:** Install suspended lighting grid/AV system/Projector screens, fix/replace window blackout shades. *Current Status – 100% Completed (Project on hold pending procurement of materials).*
- ***Renovation of 1 North:**
- ***Quite Study Area:** Phased upgrade of area / increase number of offices. *Current Status – 85% Completed (Project on hold pending procurement of furniture).*
- **Door Program:** Upgrade existing exterior and interior door frames in specific areas where existing components have exceeded end of useful life. *Current Status – 10% Completed (Anticipated Implementation summer 2019).*
- ***Theater Staff Office:** Complete renovation of lighting, furniture, floors and ceilings. *Current Status – 60% Completed (Project on hold pending procurement of furniture).*
- ***E-learning Center:** Complete renovation of lighting, furniture, floors and ceilings. *Current Status – 60% Completed (Project on hold pending procurement of furniture).*
- ***Center for Career Development:** Complete renovation of lighting, furniture, floors and ceilings. *Current Status – 10% Completed (Anticipated completions summer 2019).*

PLANNING

- **Overhaul of Work Order System:** Integration of Work Order System with ARCHIBUS workplace management platform to improve the customer service experience and expedite the processing of work orders. *Current Status – Scope development*
- **Theater Lighting Upgrade:** Replacement of theater 1 and 2 halogen lights in common areas with energy efficient LED lighting and controls. *Current Status – Scope development and funding source allocation.*
- **Campus Wide Emergency Resiliency Program:** Strengthen campus resiliency and recovery capabilities, including flood proofing, exterior lighting and emergency dual-fuel capabilities. *Current Status - Scope development and funding source allocation.*
- ***Library:** Increase number of office spaces – *Current Status – Scope development and funding source allocation.*
- **Electrical System Upgrade:** Replace all existing outdated Federal Pacific panels, breakers, etc. with equipment that is readily available in today's market. *Current Status – Scope development and funding source allocation.*
- **Fire Alarm Upgrade:** Replace and extend Fire Alarm coverage to include code compliance and extended monitoring. *Current Status – Scope development and funding source allocation.*
- **Early Childhood Center HVAC:** Upgrade existing standalone HVAC system for this area with a more energy efficient and modern system. *Current Status – Scope development and funding source allocation.*

National Safety Council

FIRST AID/C.P.R. & A.E.D.

OVERVIEW



Cardio Pulmonary Resuscitation

C.P.R.

If the victim is unresponsive to physical and verbal stimuli and appears to not to be breathing.

- Tap both shoulders and ask, are you ok?
- Check for breathing by looking at the chest and abdominal area.
- If the victim is not breathing call 911 and ask someone to get an A.E.D.
- Remove upper clothing exposing the chest and begin C.P.R.



Proud Member

Cardio Pulmonary Resuscitation

C.P.R.

- Place hands with inter locked fingers one hand on top of other in the middle of the chest in between the nipples. Be careful not to compress on the tip of the breastbone.
- Push hard and fast at a depth of at least 2 inch's at a rate of 100 – 120 compressions per minute. (the tempo of staying alive helps maintain compression rate).

Non stop compressions is considered as "Hands Only C.P.R.

If you could give breaths its recommended.



Proud Member

Cardio Pulmonary Resuscitation

C.P.R.

If breaths are going to be given follow these instructions

Tilt the head and left the chin opening the airway.

- With one hand pinch the nose and with the other open the mouth all while pushing the head back.
- Take one breath and breathe into the mouth with enough air to make the chest rise.
- Take a second breath and breathe again into the victim mouth with enough air to make the chest rise.



Proud Member

Cardio Pulmonary Resuscitation

C.P.R.

Hands Only C.P.R.

- If you are unable or unwilling to provide rescue breaths to an unresponsive victim who is not breathing perform hands only C.P.R.
- Send someone to get an A.E.D. if available and have them call 911.
- Begin hands only C.P.R. Which is defined as non stop compression in the middle of the chest in between the nipple at a compression rate of 100 – 120 compression per minute without rescue breaths.



Proud Member

Cardio Pulmonary Resuscitation

C.P.R.

Continue C.P.R. at a rate of 30 compressions followed by 2 breaths.
(30:2)



Proud Member

Cardio Pulmonary Resuscitation

C.P.R.

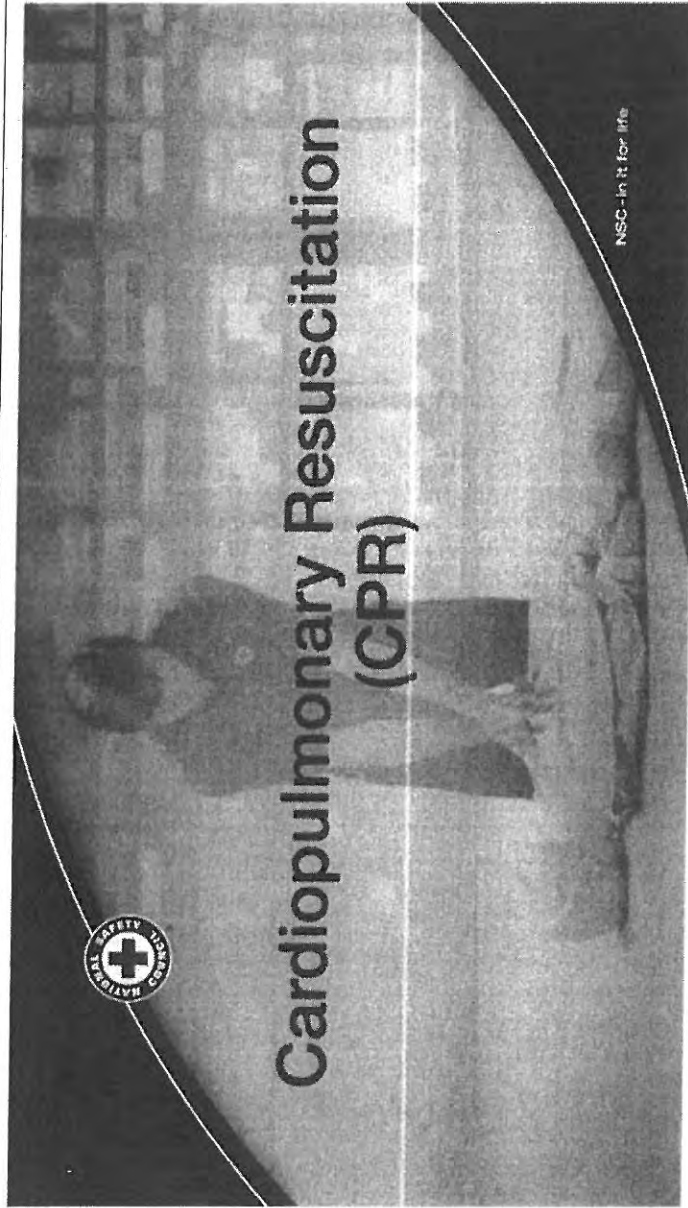
You can stop C.P.R. for the following reasons:

- The victim wakes up.
- An A.E.D. has arrived and is ready to be used.
- Someone with equal or higher training come to relieve you (EMS).
- The scene becomes unsafe.
- You are to exhausted to continue.



Proud Member

Cardio Pulmonary Resuscitation C.P.R.



Proud Member

Questions

If you are interested in signing up to take a C.P.R. First Aid course with us please feel free to contact the Department of Public Safety at the Borough of Manhattan Community College.

Lt. A. Rivera
adrivera@bmcc.cuny.edu



Proud Member