

***Interventions* Artwork Checklist**

Mildred Howard



In the Line of Fire, 1996
Screen printing, plywood
Dimensions variable

Ned Smyth



Smooth Bow, 2016
Urethane
72 x 52 x 14 inches



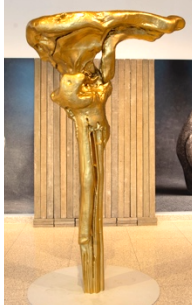
Curved and Flat, 2016
Urethane
72 x 44 x 28 inches



Winged, 2016
Urethane
72 x 48 x 22 inches



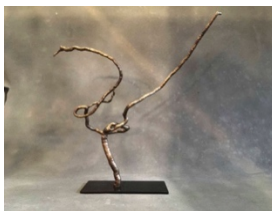
Nestle Nest, 2021
Ridged foam, Urethane coating, metallic paint
55 x 40 x 60 inches



Twig 1, 2010
3D print
96 x 58 x 32 inches



Untitled (Architectural installation), 1972/2021
Cast concrete 2x4s
Dimensions variable; concrete elements 96 x 4 x 2 inches each and
12 x 4 x 2 inches each



Twig (2-10), 2018
Cast bronze
23 x 23 x 5.5 inches



Twig (1-2), 2018
Cast bronze
14.25 x 11 X 3.5 inches



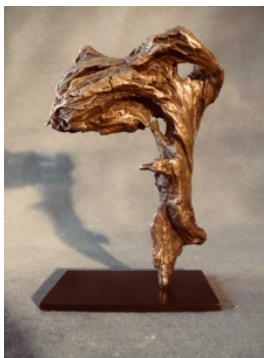
Twig (2-6), 2018
Cast bronze
8.5 x 4.5 x 2.5 inches



Twig (1-5), 2018
Cast bronze
7 x 4 x 2 inches



Twig (1-8), 2018
Cast bronze
13 x 7 x 3 inches



Twig (2-1), 2018
Cast bronze
9 x 8 x 4.25 inches



Twig (2-4), 2018
Cast bronze
13 x 6 x 3 inches



Twig (2-2), 2018
Cast bronze
10 x 4.5 x 2.5 inches



Portrait Asian Mountain, 2016
C-print
96 X 72 inches



Pregnant 2, 2016
C-print
96 X 72 inches



Pregnant 7, 2016
C-print
96 X 72 inches



Torso Cliff, 2016
C-print
96 X 72 inches



Twig 2-1, 2018
C-print
68 x 48 inches



Twig 1-8, 2018
C-print
68 x 48 inches



Twig 1-2, 2018
C-print
68 x 48 inches



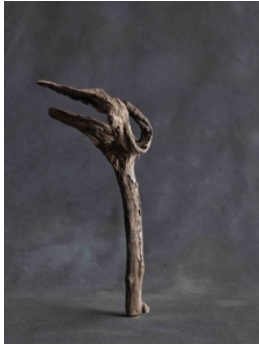
Twig 1-5, 2018
C-print
68 x 48 inches



Twig 2-6, 2018
C-print
68 x 48 inches



Twig 2-2, 2018
C-print
68 x 48 inches



Twig 2-4, 2018
C-print
68 x 48 inches



Twig 2-10, 2018
C-print
68 x 48 inches



Twig 4-1, 2018
C-print
68 x 48 inches